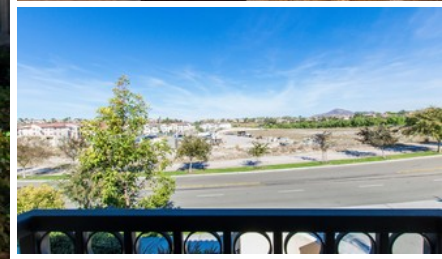
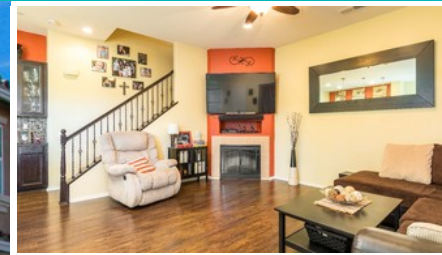




1593 Corte Seville Unit 1, Chula Vista, CA 91913

MLS #IG17262813



Offering

**\$529,990**

Main Features

- 2,303 Square Feet
- Bed: 5
- Bath: 3.5
- Community Pool & Spa
- Fireplace
- Ceiling Fans
- Granite Counters
- Mountain Views
- Loft

## | GORGEOUS HOME

Your search is over! Amazing Chula Vista townhome close to freeways, incredible dining, and the Otay shopping area! Meticulously maintained interior offers gorgeous laminate flooring, custom paint tones, and picture windows throughout. Beautifully tiled fireplace radiates the perfect home-like feel. Cook like a pro in the upgraded kitchen w/rich espresso cabinetry, stainless steel appliances, granite counters, and a center island w/breakfast bar.

Spacious master suite has an adjoining spa like bath that showcases phenomenal mountain and city views! Relax in the private courtyard and enjoy the spectacular Southern California weather from the covered patio! This home has it all! Put it on your must see list and see it today!



**Dr. Whenrica Joe McAfee Sr**  
 Realtor  
**Brokerage** Harcourts - WE Realty  
**Phone** (951) 250-1160  
**Email** info@WE-Realty.com

Interested?  
 View more information

<http://1593-corte-seville-unit-1.properties.listerassist.com>